

# The LY detector

Keir Cheetham

Adverbs should be avoided.

If you need to qualify the verb, perhaps there is a better verb available.

Which is better:

*He ran extremely fast*

Or

*He sprinted?*

Here's a way to check your document for adverbs which end in 'ly' – most of the common ones.

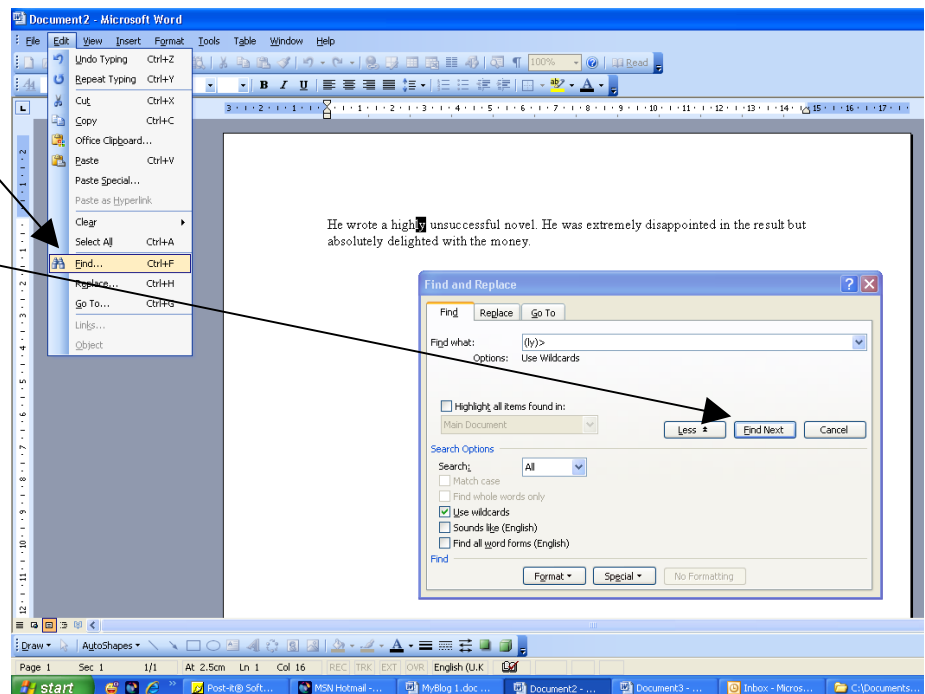
Use Edit>Find from the menu bar

In the 'Find what:' bar type: (ly)>. Press the 'Find Next' button.

Make sure the 'Use wildcards' box is ticked (click on it if not).

If you can't see this box, click on the

 box to open out the option.



You can go back to the document to make a change and then click on 'Find Next' for the next one.